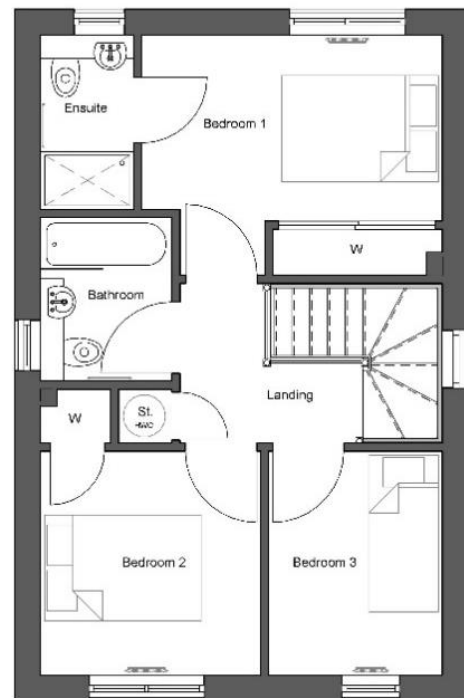


ROSEHAUGH II | 3 Bedroom Detached Villa

Ground Floor



First Floor



ROOM	SIZE (m)
Lounge	5.07 x 3.32
Kitchen / Dining	5.20 x 3.10
W/C	1.93 x 1.76
Bedroom 1	3.90 x 2.41
En-suite	2.31 x 1.20
Bedroom 2	2.90 x 2.85
Bedroom 3	2.90 x 2.25
Bathroom	2.06 x 1.70
Gross Internal Area	86.48m²



The Rosehaugh is a classic 3 bedroom detached property, with a spacious lounge and large open plan kitchen and dining area

All images are for illustrative purposes only. The measurements or dimensions given should not be used for calculating carpet sizes or appliance & furniture requirements. Copyright, Pat Munro (AIness) Ltd ©

info@patmunrohomes.co.uk

www.patmunrohomes.co.uk